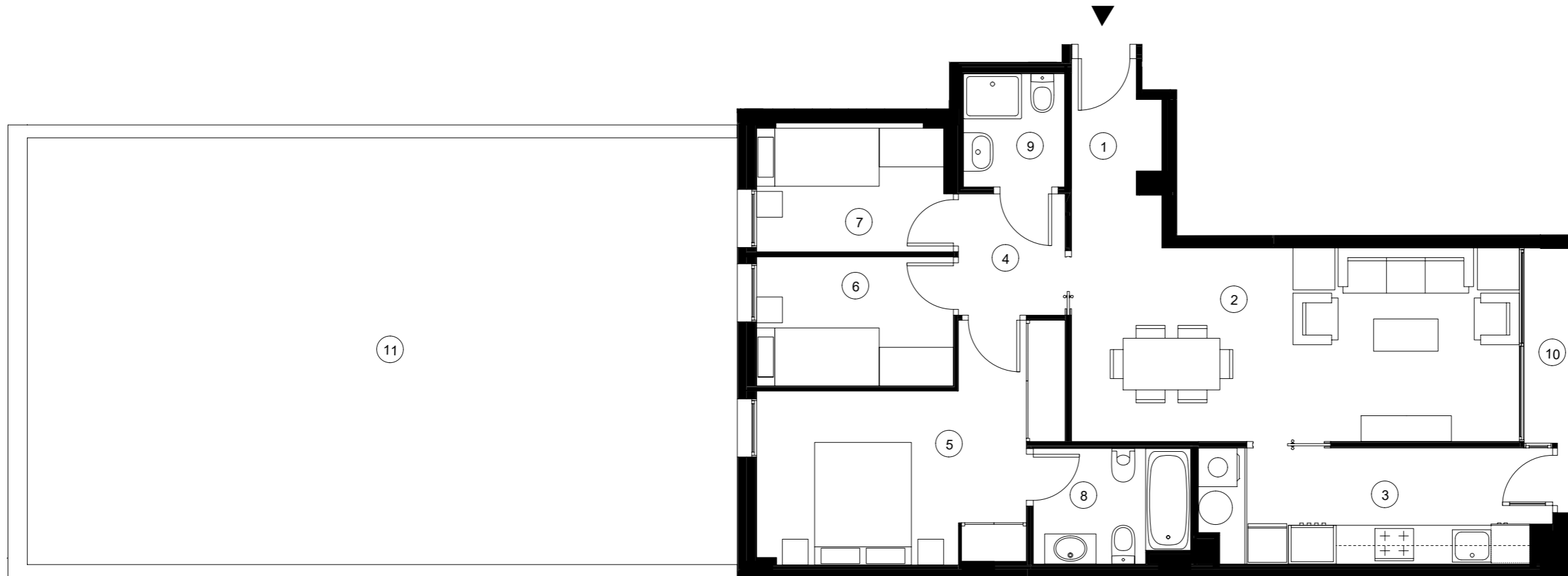
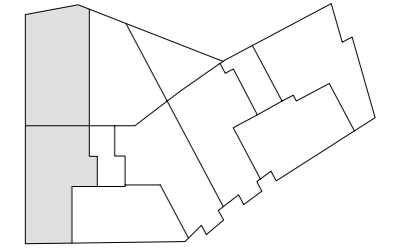


C/ Urgell 1 Vilanova i la Geltrú



PLANTA PRIMERA - Escala A - Porta 1

SUPERFÍCIES ÚTILS HABITATGE

| | |
|-------------------|----------------------|
| 1. Rebedor | 3,71 m ² |
| 2. Menjador-Estar | 20,83 m ² |
| 3. Cuina | 9,49 m ² |
| 4. Distribuidor | 3,11 m ² |
| 5. Dormitori 1 | 13,43 m ² |
| 6. Dormitori 2 | 6,11 m ² |
| 7. Dormitori 3 | 6,00 m ² |
| 8. Bany 1 | 4,22 m ² |
| 9. Bany 2 | 2,75 m ² |
| 10. Terrassa | 2,42 m ² |
| 11. Pati | 72,79 m ² |

SUPERFÍCIES ÚTILS TOTALS

| | |
|----------------|-----------------------|
| Total interior | 69,65 m ² |
| Total exterior | 75,21 m ² |
| Total útil | 144,86 m ² |

SUPERFÍCIE CONSTRUÏDA

| | |
|-------|-----------------------|
| Total | 116,29 m ² |
|-------|-----------------------|

ESCALA 1/75

