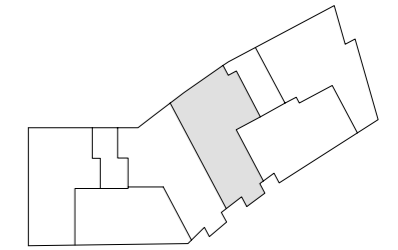
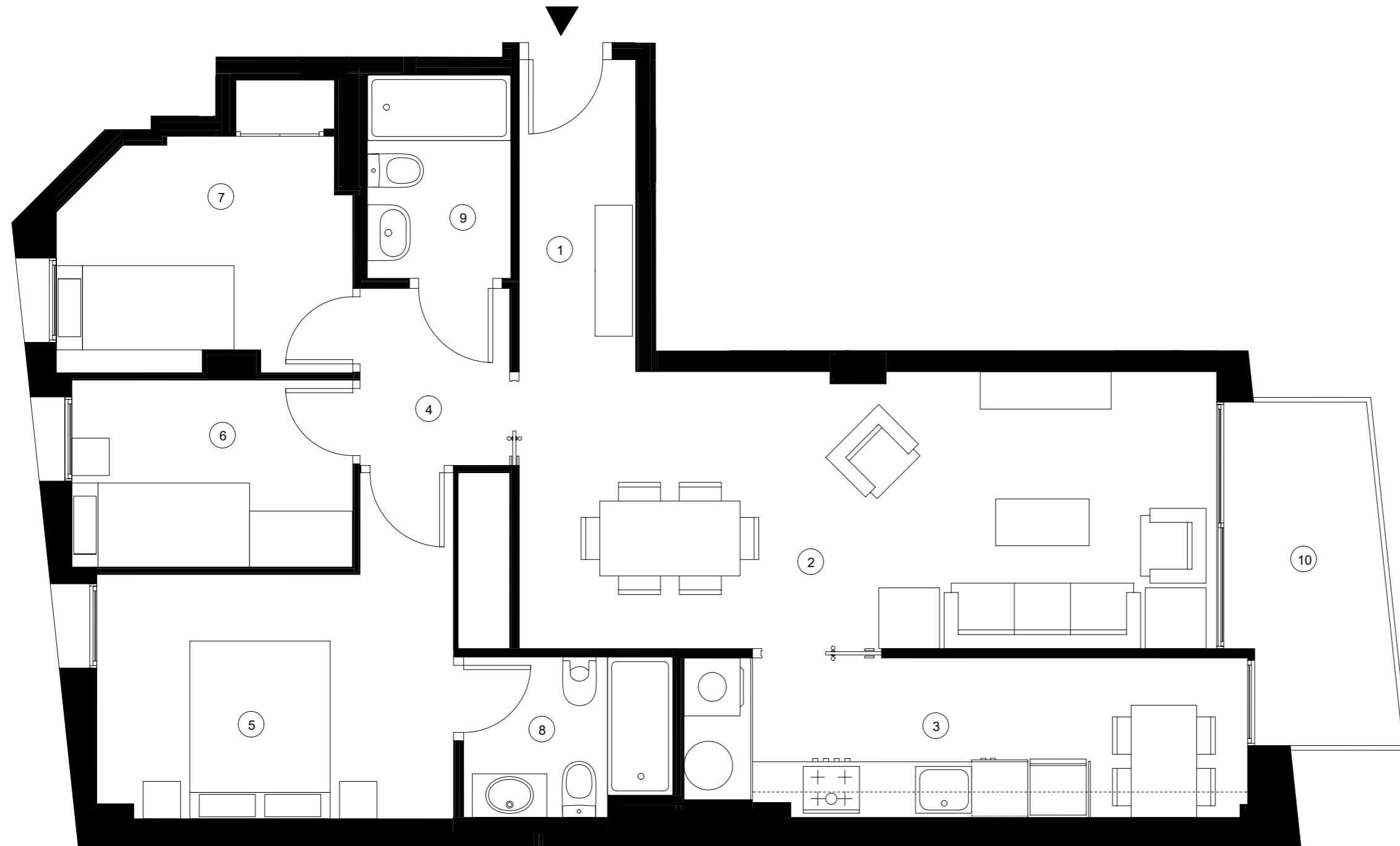


C/ Urgell 1 Vilanova i la Geltrú



PLANTA TIPUS - Escala B - Porta 3

SUPERFÍCIES ÚTILS HABITATGE

| | |
|-------------------|----------------------|
| 1. Rebedor | 4,15 m ² |
| 2. Menjador-Estar | 22,09 m ² |
| 3. Cuina | 10,06 m ² |
| 4. Distribuidor | 3,03 m ² |
| 5. Dormitori 1 | 12,12 m ² |
| 6. Dormitori 2 | 6,01 m ² |
| 7. Dormitori 3 | 8,00 m ² |
| 8. Bany 1 | 3,68 m ² |
| 9. Bany 2 | 3,33 m ² |
| 10. Terrassa | 5,98 m ² |

SUPERFÍCIES ÚTILS TOTALS

| | |
|----------------|----------------------|
| Total interior | 72,47 m ² |
| Total exterior | 5,98 m ² |
| Total útil | 78,45 m ² |

SUPERFÍCIE CONSTRUÏDA

| | |
|-------|----------------------|
| Total | 98,51 m ² |
|-------|----------------------|

ESCALA 1/50

